



TIPPERS AND DROPSIDES

STEEL THREE-WAY TIPPER



Industrial bodybuilder for Commercial Vehicles



ROBUSTNESS

& Elegance



STEEL THREE-WAY TIPPER

BODY

- S355 steel floor, 3 mm thick
- Rectangular tube side-members, spacers
- Border fitting to band clamp
- Aluminium tubular sideboards, 2.8 mm thick, 400 mm high, foldable, removable and interchangeable
- Locking-grips with double security integrated in sideboards
- S355 steel bulkhead, 2 mm thick, 450 mm high
- Wire mesh cab protection, removable, 4 mm diameter, galvanised
- Alu rear door, 2.8 mm thick, automatic opening, 450 mm high
- Removable, steel, cone-shaped rear pillars, with 12 mm fixing bolts, galvanised and painted, 3 mm thick
- Sideboard extension gussets, 100 mm high
- Polyurethane mudguards
- Cataphoresis treated mudguard brackets, black RAL9005 powder-painting
- Certified alu side underrun protection, black powder-painting
- Geomet treated bolts (5 times more resistant than standard galvanisation)

SUBFRAME

- S355 steel subframe, 4 mm thick, drilled, to be bolted on vehicle chassis
- Tipping through TIPPING HOIST with compass system (4) (no overlapping of components under the subframe), 300 bar, 50° lateral and rear tilting angle
- Electropump unit with integrated 3L oil tank (12 V)
- Remote control with 2 buttons, in driver's cab
- Safety solenoid valve on cylinder, circuit-breaker and safety strut
- Tipping on bearings and balls, with foolproof system (prevents incorrect manoeuvres) (1)

FINISHING

- Shot-blasting
- Powder-painting applied separately on each component
- Top coat: epoxy powder applied separately on each component
- Total coat thickness of 120 µm
- Seals between non seam-welded parts

OPTIONS

(non-exhaustive list)

- Removable and partly foldable sideboard extensions
- Gantry / Tool holder / Folding footstep
- Toolbox under tipper / Toolbox behind driver's cab
- Set back and high-mounted backlights
- TRIVA rear underrun protection : certified for a gross weight < or = 7,5 T, towing device certified for a towing up to 3,5 T

VULCAIN Tipper : the INTELLIGENT DESIGN

ROBUSTNESS

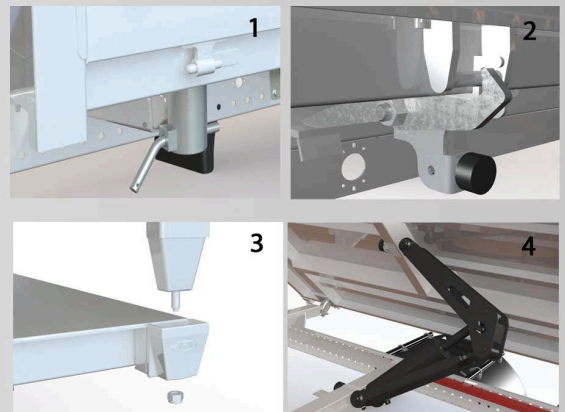
- ✓ All parts are powder-painted separately, 120 µm coat thickness (priming + top coat)
- ✓ Tipping hoist with compass system (4)
- ✓ Cone-shaped pillars with fixing bolts (3)

PRACTICAL

- ✓ Interchangeability left/right sideboards
- ✓ Interchangeability steel/alu sideboards
- ✓ Sealing guaranteed by a lip on each sideboard
- ✓ Foolproof system to prevent incorrect manoeuvres
- ✓ Border fitting to band clamp
- ✓ Buffer stops for rear door and sideboards (2)
- ✓ Possibility to bolt a toolbox on subframe
- ✓ Many options with bolt system

SERVICE

- ✓ Two-year warranty
- ✓ Solid customer service
- ✓ A JPM technical interlocutor is at your disposal



Versions

Pre-treated kit
Painted kit
Painted and assembled:

Weight *

2800 mm : 570 kg
3200 mm : 630 kg
3500 mm : 690 kg

* approx. indication

BENNES JPM

PRODUCTION AND HEAD OFFICE
RN 88 - 12800 Naucelle - France
Tel: (33) 0565692470
Fax: (33) 0565692377
contact@bennes-jpm.com

Distributor's stamp



www.bennes-jpm.com