



TIPPERS AND DROPSIDES

ALUMINIUM THREE-WAY TIPPER



Industrial bodybuilder for Commercial Vehicles



ROBUSTNESS
& Elegance



www.bennes-jpm.com

ALUMINIUM THREE-WAY TIPPER

BODY

- Aluminium floor, 5083 H111 quality, 4 mm thick
- Border fitting to band clamp
- Aluminium tubular sideboards, 2.8 mm thick, 400 mm high, foldable, removable and interchangeable
- Locking-grips integrated in sideboards
- Bulkhead 450 mm high
- Aluminium wire mesh cab protection, galvanised, removable, 4 mm diameter
- Aluminium rear door, 2.8 mm thick, automatic opening, 450 mm high
- Removable, steel, cone-shaped rear pillars, with 12 mm fixing bolts, galvanised and painted, 3 mm thick
- Sideboard extension gussets, 100 mm high
- Polyurethane mudguards
- Cataphoresis treated mudguard brackets, black RAL9005 powder-painting
- Certified aluminium side underrun protection, black powder-painting
- Geomet treated bolts (5 times more resistant than standard galvanisation)

SUBFRAME

- Aluminium subframe, 6 mm thick, drilled, to be bolted on vehicle chassis
- Tipping through TIPPING HOIST with compass system (4) (no overlapping of components under the subframe), 300 bar, 50° lateral and rear tilting angle
- Electropump unit with integrated 3L oil tank (12 V)
- Remote control with 2 buttons, in driver's cab
- Safety solenoid valve on cylinder, circuit-breaker and safety strut
- Tipping on bearings and balls, with foolproof system (prevents incorrect manoeuvres) (1)

FINISHING

- Top coat: epoxy powder applied separately on each component
- Total coat thickness of 120 µm

OPTIONS

(non-exhaustive list)

- Removable and partly foldable sideboard extensions
- Gantry / Tool holder / Folding footstep
- Toolbox under tipper / Toolbox behind driver's cab
- Set back and high-mounted backlights
- TRIVA rear underrun protection : certified for a gross weight < or = 7,5 T, towing device certified for a towing up to 3,5 T

VULCAIN Tipper : the INTELLIGENT DESIGN

ROBUSTNESS

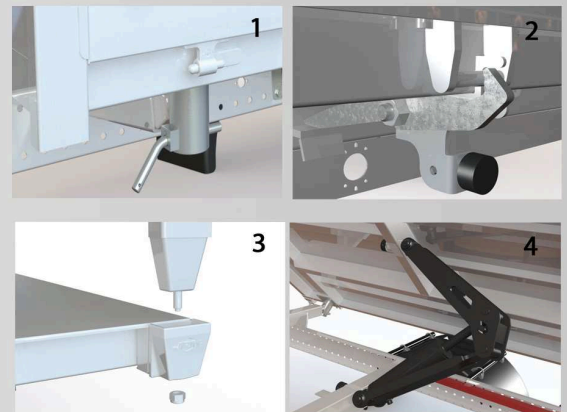
- ✓ All parts are powder-painted separately, 120 µm coat thickness (priming + top coat)
- ✓ Tipping hoist with compass system (4)
- ✓ Cone-shaped pillars with fixing bolts (3)

PRACTICAL

- ✓ More payload
- ✓ Interchangeability left/right sideboards
- ✓ Border fitting to band clamp
- ✓ Rubber buffer stops for rear door and sideboards (2)
- ✓ Possibility to bolt a toolbox on subframe
- ✓ Many options with bolt system

SERVICE

- ✓ Two-year warranty
- ✓ Solid customer service
- ✓ A JPM technical interlocutor is at your disposal



Versions

Painted kit
Painted and assembled:

Weight *

2800 mm : 410 kg
3200 mm : 440 kg
3500 mm : 470 kg

* approx. indication

BENNES JPM

PRODUCTION AND HEAD OFFICE
RN 88 - 12800 Naucelle - France
Tel: (33) 0565692470
Fax: (33) 0565692377
contact@bennes-jpm.com

Distributor's stamp

www.bennes-jpm.com